

Creating IT Workforce  
for Nation Building

### MITCON e-School

- ◆  1 st Floor, MITCON Udyog Prabodhini,  
Agriculture College Campus, Near DIC Office,  
Shivajinagar, Pune - 411005.
- ◆  (020) 66289307
- ◆  9822061967
- ◆  admissions@mitconeschool.com
- ◆  www.mitconeschool.com

**Career Helpline : 9850025100**



# GIS

(Geographic Information System)

\*Terms & Conditions Apply

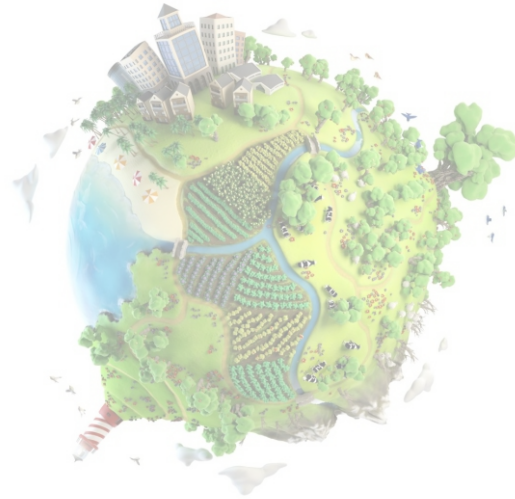


## Advance Certificate Course in GIS

Duration  
7 Months

### Contents:

- Introduction to Mapping Technique
- AutoCAD
- Arc GIS
- QGIS
- ERDAS
- Global Mapper
- Assignments



## Basic Certificate Course in GIS

Duration  
3 Months

### Contents:

- Introduction to Mapping Technique
- AutoCAD
- Arc GIS
- QGIS
- Assignments

## Certificate Course in GIS

Duration  
6 Months

### Contents:

- Introduction to Mapping Technique
- AutoCAD
- Arc GIS
- QGIS
- ERDAS
- Assignments

